

# THE DON DISTRICT SALMON FISHERY BOARD STOCKING REPORT 2011



Stephen planting salmon eggs into an artificial Redd in the Upper Ernan  
Burn on the Edinglassie Estate

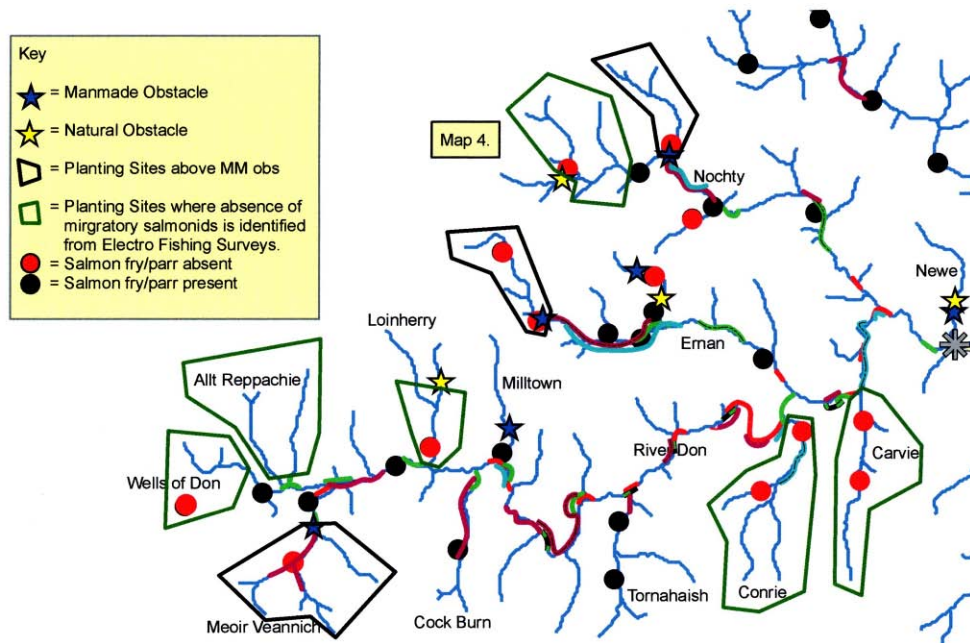
## Introduction

### Eyed Ova Stocking of Salmon and Sea Trout 2011

The stocking of salmon and sea trout eyed Ova commenced on the 18<sup>th</sup> of February and was completed by the end of the second week of March. A total of approximately 311,000 salmon eggs and 36,000 sea trout eggs have now been stocked out into the river system.

Recommendations by the River Don Trust were followed in the stocking procedure. Stocking areas were identified by means of electro fishing during 2010, which showed the areas void of salmon and therefore ideal for restocking. Once these areas were stocked, the surplus eggs were stocked into spawning beds in the main river which had shown very little spawning activity during 2010. In each of the following maps within this report, you will see flags which indicate an artificial salmon or sea trout redd. In each redd approximately 1000 eggs has been planted, the Grid reference of each redd site has been recorded which is also in this report for future data recording.

Map below shows the recommended stocking sites as part of recommendations from the River Don Trust.



## NOCHTY SYSTEM

On the Nocht system we stocked 4 different areas; they were as follows, Quillichan Burn 14,000 eggs planted, Little Glen Burn 11,000 eggs planted, Allt Na Caillich, and the main stem of the upper Nocht burn 37,000 eggs planted. The Grid reference for each Redd site is as follows.

### **Quillichan Burn.**

Site 1, NJ 31542 - 15375	Site 5, NJ 30962 - 15155	Site 9, NJ 30397 - 14755
Site 2, NJ 31402 - 15300	Site 6, NJ 30797 - 15050	Site 10, NJ 30297 - 14720
Site 3, NJ 31267 - 15240	Site 7, NJ 30682 - 14875	Site 11, NJ 30077 - 14600
Site 4, NJ 31117 - 15240	Site 8, NJ 30532 - 14800	Site 12, NJ 30077 - 14415

### **Little Glen Burn**

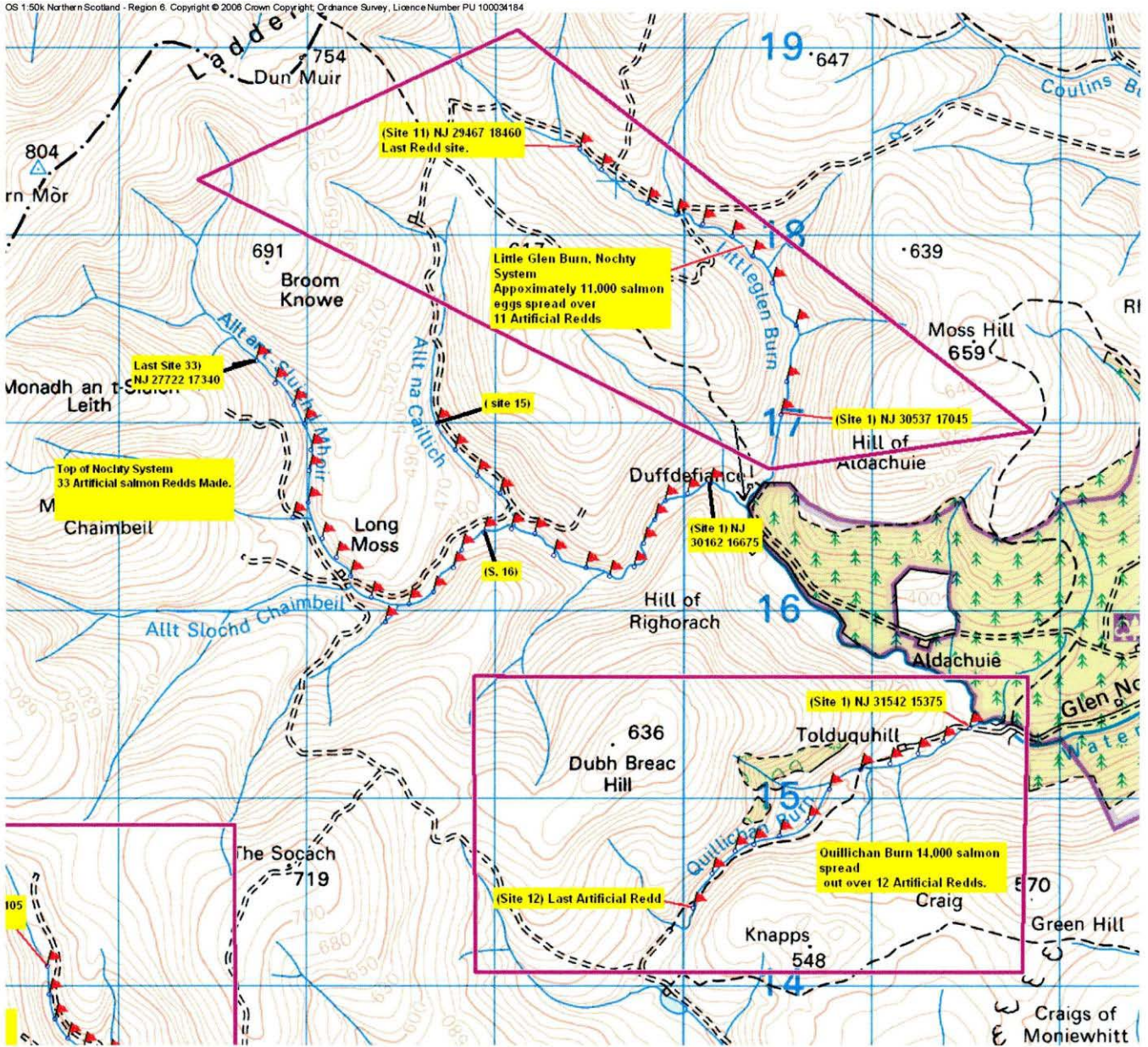
Site 1, NJ 30537 - 17045	Site 5, NJ 30387 - 17890	Site 9, NJ 29827 - 18170
Site 2, NJ 30567 - 17220	Site 6, NJ 30277 - 17995	Site 10, NJ 29582 - 18350
Site 3, NJ 30617 - 17520	Site 7, NJ 30122 - 18060	Site 11, NJ 29467 - 18460
Site 4, NJ 30492 - 17745	Site 8, NJ 29982 - 18110	

### **Nocht Burn Upper Main Stem & Allt Na Caillich**

Site 1, NJ 30162 - 16625	Site 13, NJ 28927 - 16720	Site 24, NJ 28177 - 16285
Site 2, NJ 30042 - 16625	Site 14, NJ 28807 - 16855	Site 25, NJ 28102 - 16385
Site 3, NJ 29922 - 16585	Site 15, NJ 28712 - 16995	Site 26, NJ 27947 - 16495
Site 5, NJ 29807 - 16360	Site 16, NJ 28962 - 16415	Site 27, NJ 28027 - 16575
Site 6, NJ 29757 - 16235	Site 17, NJ 28842 - 16325	Site 28, NJ 28032 - 16745
Site 7, NJ 29627 - 16185	Site 18, NJ 28797 - 16230	Site 29, NJ 28042 - 16855
Site 8, NJ 29502 - 16232	Site 19, NJ 28692 - 16100	Site 30, NJ 28007 - 16995
Site 9, NJ 29332 - 16295	Site 20, NJ 28562 - 16035	Site 31, NJ 27952 - 17095
Site 10, NJ 29232 - 16410	Site 21, NJ 28437 - 15940	Site 32, NJ 27852 - 17210
Site 11, NJ 29107 - 16435	Site 22, NJ 28362 - 16070	Site 33, NJ 27722 - 17340
Site 12, NJ 29047 - 16625	Site 23, NJ 28252 - 16185	



Map below showing upper Nocht system stocking areas.



### Carvie & Conrie

These two tributaries were void of any salmon; they are now fully stocked out this year with salmon, 31,000 eggs planted in the Carvie and 23,000 in the Conrie burn. In recent years we have been stocking these two tributaries with trout.

Grid reference of each Redd site is as follows.

#### Carvie Burn

Site 1, NJ 34962 - 10690	Site 12, NJ 35042 - 09710	Site 23, NJ 34657 - 08375
Site 2, NJ 34972 - 10590	Site 13, NJ 35002 - 09645	Site 24, NJ 34702 - 08240
Site 3, NJ 34972 - 10415	Site 14, NJ 35012 - 09565	Site 25, NJ 34667 - 08100
Site 4, NJ 34952 - 10325	Site 15, NJ 35027 - 09490	Site 26, NJ 34622 - 07990
Site 5, NJ 34945 - 10250	Site 16, NJ 35037 - 09420	Site 27, NJ 34632 - 07830
Site 6, NJ 34977 - 10160	Site 17, NJ 34997 - 09360	Site 28, NJ 34577 - 07690
Site 7, NJ 35042 - 09995	Site 18, NJ 35047 - 09335	Site 29, NJ 34550 - 07584
Site 8, NJ 35042 - 09935	Site 19, NJ 34987 - 09250	Site 30, NJ 34572 - 07495
Site 9, NJ 35072 - 09880	Site 20, NJ 34947 - 09175	Site 31, NJ 34592 - 07425
Site 10, NJ 35077 - 09830	Site 21, NJ 34942 - 08955	Site 32, NJ 34607 - 07355
Site 11, NJ 35062 - 09745	Site 22, NJ 34837 - 08435	

#### Conrie Burn

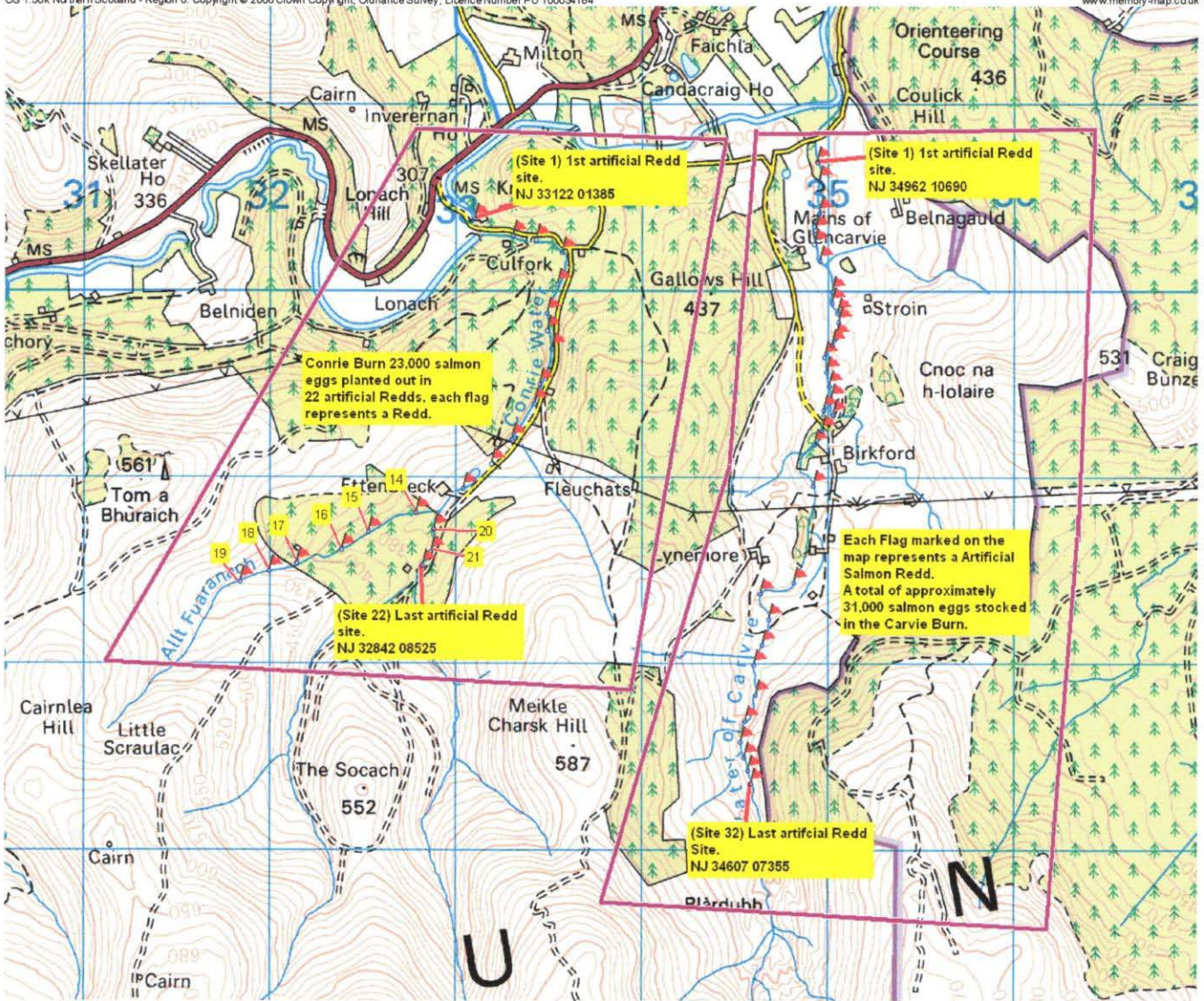
Site 1, NJ 33122 - 01385	Site 9, NJ 33472 - 09500	Site 17, NJ 32164 - 08544
Site 2, NJ 33327 - 10295	Site 10, NJ 33442 - 09395	Site 18, NJ 32017 - 08495
Site 3, NJ 33448 - 10275	Site 11, NJ 33322 - 09205	Site 19, NJ 31862 - 08440
Site 4, NJ 33592 - 10205	Site 12, NJ 33212 - 09070	Site 20, NJ 32902 - 08720
Site 5, NJ 33567 - 10035	Site 13, NJ 33062 - 08940	Site 21, NJ 32887 - 08600
Site 6, NJ 33512 - 09880	Site 14, NJ 32807 - 08810	Site 22, NJ 32842 - 08525
Site 7, NJ 33512 - 09785	Site 15, NJ 32552 - 08705	
Site 8, NJ 33537 - 09690	Site 16, NJ 32407 - 08610	



# Carvie & Conrie stocking areas

OS 1:50k Northern Scotland - Region 6. Copyright © 2006 Crown Copyright, Ordnance Survey, Licence Number PU 100034184

www.memory-map.co.uk



Allt Nan Aighean 4,000 eggs planted, Alt Reppachie Burn 12,000 eggs planted and Burn of Lionherry approximately 10,000 eggs planted. These 3 small tributaries are right at the top of the river system, which were also void of any young salmon. Grid references are as follows on Redd planting sites.

**Allt Nan Aighean**

Site 1, NJ 20881 - 09030	Site 3, NJ 20746 - 09170
Site 2, NJ 20811 - 09095	Site 4, NJ 20696 - 09255

**Alt Reppachie Burn**

Site 1, NJ 21446 - 09450	Site 6, NJ 21336 - 09885
Site 2, NJ 21431 - 09515	Site 7, NJ 21332 - 09925
Site 3, NJ 21406 - 09620	Site 8, NJ 21401 - 10040
Site 4, NJ 21391 - 09710	Site 9, NJ 21441 - 10155
Site 5, NJ 21351 - 09775	Site 10, NJ 21431 - 10250

**Burn of Loinherry**

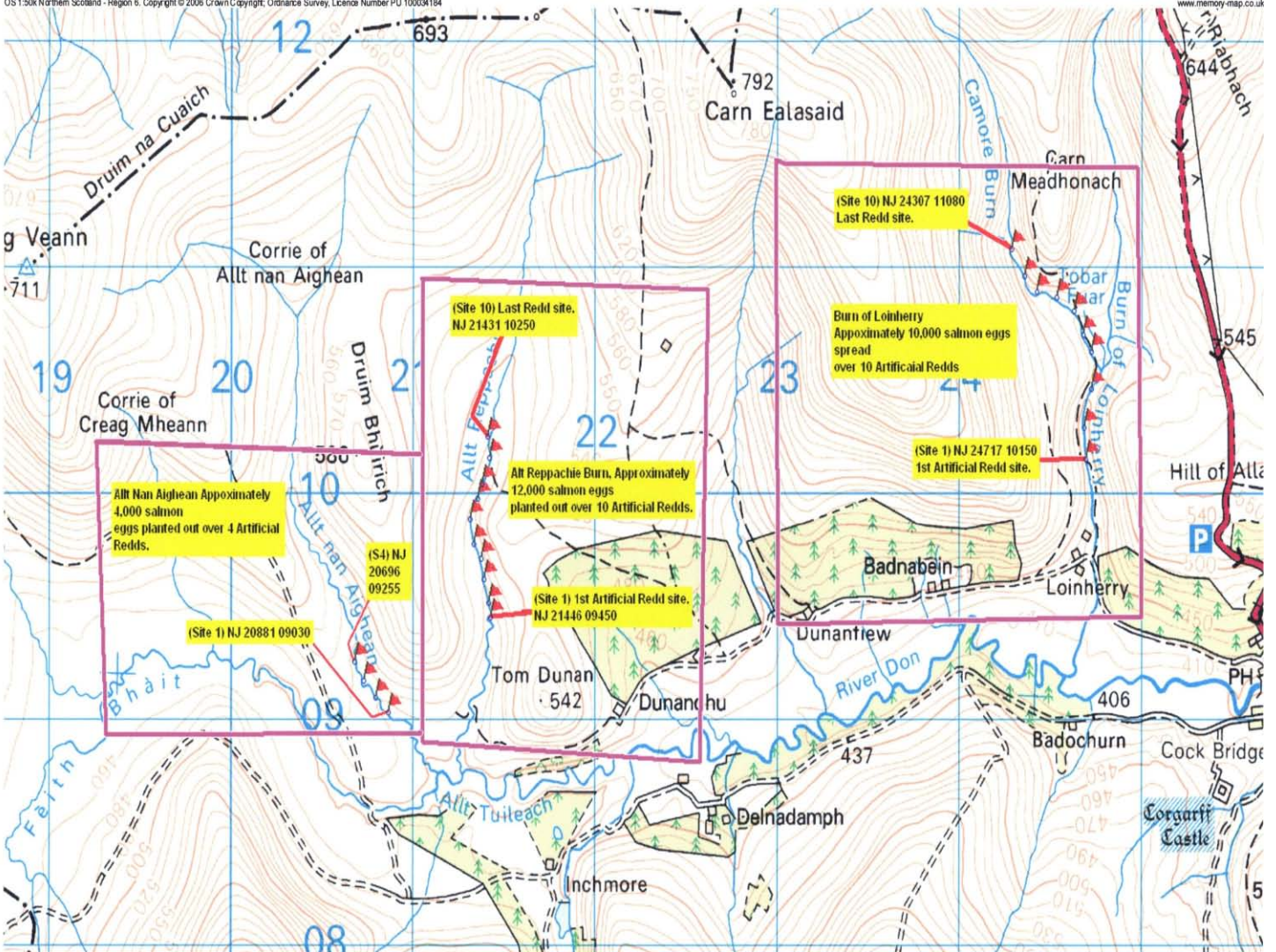
Site 1, NJ 24717 - 10150	Site 6, NJ 24652 - 10805
Site 2, NJ 24707 - 10290	Site 7, NJ 24557 - 10865
Site 3, NJ 24747 - 10625	Site 8, NJ 24447 - 10890
Site 4, NJ 24747 - 10700	Site 9, NJ 24377 - 10960
Site 5, NJ 24702 - 10700	Site 10, NJ 24307 - 11080



# Allt Nan Aighean, Allt Reppachie Burn, Burn of Loinherry

OS 1:50k Northern Scotland - Region 6. Copyright © 2006 Crown Copyright. Ordnance Survey, Licence Number PU 100034184

www.memory-map.co.uk





Here we have 3 sections of the top part of the river system, Feith Bhait, where 8, 000 salmon eggs have been planted, Allt Tuileach where we have planted 13,500 salmon eggs and Meoir Veannaich which is at Delnadamp and has an impassable Dam; we have now stocked that part of the river catchment with approximately 46,000 salmon eggs. Grid references are as follows.

**Feith Bhait**

Site 1, NJ 20666 - 08665	Site 5, NJ 20476 - 08885
Site 2, NJ 20591 - 08700	Site 6, NJ 20426 - 08975
Site 3, NJ 20546 - 08775	Site 7, NJ 20396 - 09015
Site 4, NJ 20496 - 08835	Site 8, NJ 20361 - 09075

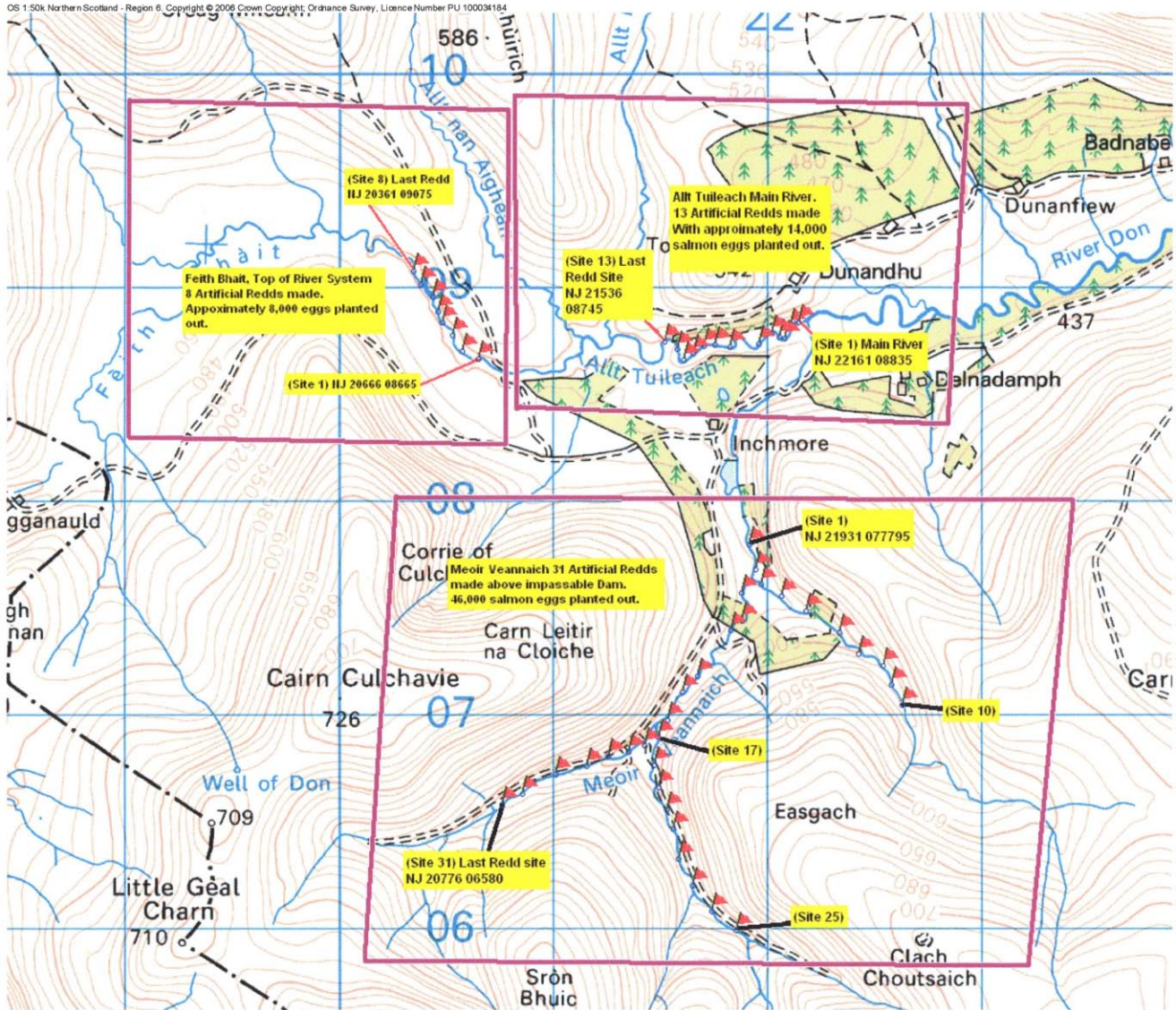
**Allt Tuileach**

Site 1, NJ 22161 - 08835	Site 6, NJ 21976 - 08735	Site 11, NJ 21626 - 08660
Site 2, NJ 22121 - 08815	Site 7, NJ 21841 - 08720	Site 12, NJ 21596 - 08710
Site 3, NJ 22096 - 08760	Site 8, NJ 21771 - 08730	Site 13, NJ 21536 - 08745
Site 4, NJ 22071 - 08765	Site 9, NJ 21721 - 08725	
Site 5, NJ 22036 - 08735	Site 10, NJ 21671 - 08690	

**Meoir Veannaich**

Site 1, NJ 21931 - 07795	Site 12, NJ 21896 - 07440	Site 23, NJ 21666 - 06200
Site 2, NJ 21961 - 07680	Site 13, NJ 21846 - 07395	Site 24, NJ 21756 - 06080
Site 3, NJ 21986 - 07610	Site 14, NJ 21691 - 07180	Site 25, NJ 21871 - 05990
Site 4, NJ 22081 - 07555	Site 15, NJ 21621 - 07105	Site 26, NJ 21366 - 06825
Site 5, NJ 22196 - 07485	Site 16, NJ 21551 - 06975	Site 27, NJ 21271 - 06805
Site 6, NJ 22351 - 07385	Site 17, NJ 21506 - 06895	Site 28, NJ 21171 - 06760
Site 7, NJ 22441 - 07285	Site 18, NJ 21486 - 06765	Site 29, NJ 21026 - 06720
Site 8, NJ 22556 - 07230	Site 19, NJ 21506 - 06660	Site 30, NJ 20871 - 06630
Site 9, NJ 22596 - 07140	Site 20, NJ 21546 - 06555	Site 31, NJ 20776 - 06580
Site 10, NJ 22646 - 07045	Site 21, NJ 21576 - 06465	
Site 11, NJ 21896 - 07570	Site 22, NJ 21601 - 06325	

The map below showing the three stocking areas, Feith Bhait, Allt Tuileach and Meoir Veannaich.





The next three sections are of the Main River above and below Cock Bridge down to a point known as Burnside. 13,000 salmon eggs have been stocked out in section 1, where 12 artificial Redds have been made. In section 2, another 13,000 eggs have been stocked and in section 3, 12,000 salmon eggs have been planted out. The Grid reference of each site is as follows.

**Section 1**

Site 1, NJ 25027 - 09180	Site 5, NJ 24412 - 09275	Site 9, NJ 24186 - 09335
Site 2, NJ 25002 - 09185	Site 6, NJ 24347 - 09200	Site 10, NJ 24171 - 09320
Site 3, NJ 24752 - 09090	Site 7, NJ 24327 - 09195	Site 11, NJ 24111 - 09375
Site 4, NJ 24677 - 09100	Site 8, NJ 24236 - 09245	Site 12, NJ 24086 - 09455

**Section 2**

Site 1, NJ 26282 - 09145	Site 5, NJ 26527 - 08700	Site 9, NJ 26607 - 08145
Site 2, NJ 26487 - 09050	Site 6, NJ 26597 - 08550	Site 10, NJ 26722 - 08035
Site 3, NJ 26517 - 09050	Site 7, NJ 26527 - 08400	Site 11, NJ 26897 - 07950
Site 4, NJ 26467 - 08900	Site 8, NJ 26492 - 08145	

**Section 3**

Site 1, NJ 28497 - 08430	Site 5, NJ 28142 - 08160	Site 9, NJ 28272 - 07565
Site 2, NJ 28367 - 08450	Site 6, NJ 28237 - 07990	Site 10, NJ 28152 - 07390
Site 3, NJ 28302 - 08425	Site 7, NJ 28232 - 07855	Site 11, NJ 27902 - 07195
Site 4, NJ 28222 - 08300	Site 8, NJ 28232 - 07725	





Gorchory to Lonach Hill approximately 25,000 salmon eggs planted over 21 artificial Redds. Candacraig to Mouth of the Carvie Burn 12,000 salmon eggs were stocked out over 11 artificial Redds. Grid references are as follows.

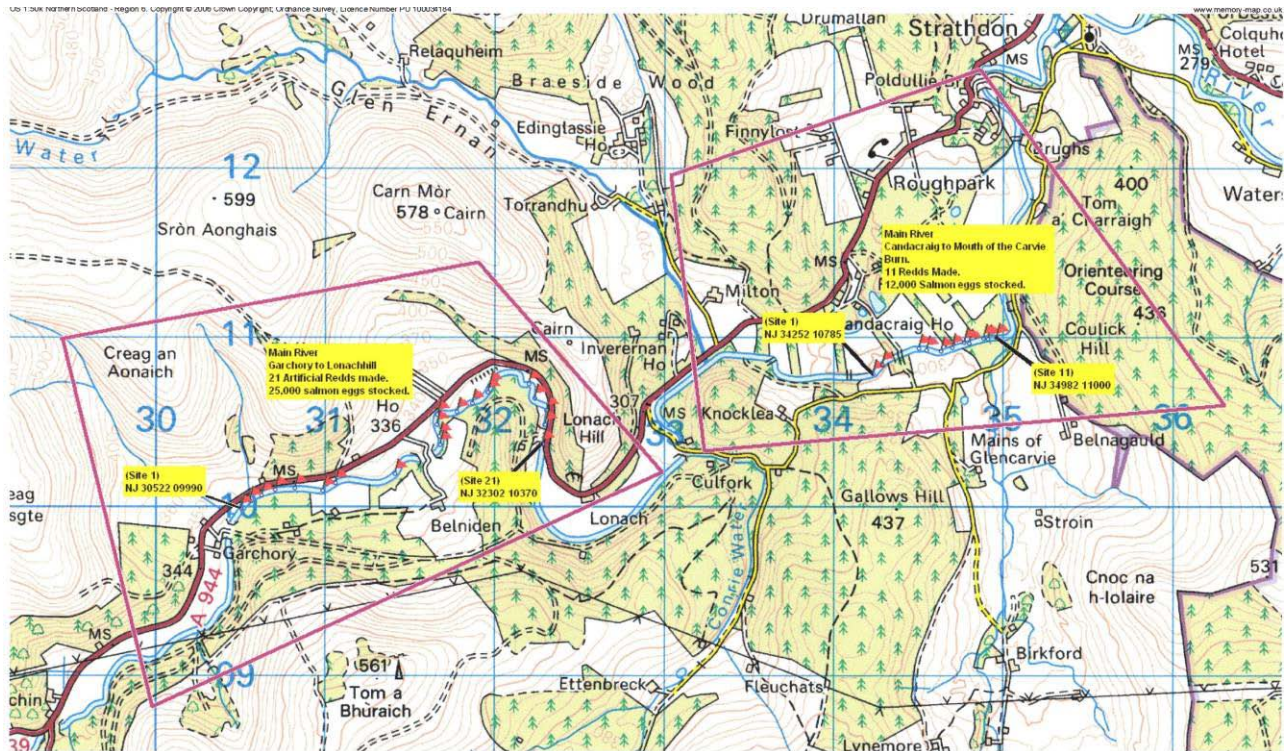
### Gorchory to Lonach Hill

Site 1, NJ 30522 - 09990	Site 8, NJ 31432 - 10195	Site 15, NJ 31982 - 10675
Site 2, NJ 30577 - 10035	Site 9, NJ 31697 - 10365	Site 16, NJ 31992 - 10715
Site 3, NJ 30647 - 10065	Site 10, NJ 31692 - 10415	Site 17, NJ 32222 - 10725
Site 4, NJ 30727 - 10100	Site 11, NJ 31677 - 10470	Site 18, NJ 32257 - 10640
Site 5, NJ 30842 - 10110	Site 12, NJ 31682 - 10545	Site 19, NJ 32327 - 10570
Site 6, NJ 31002 - 10075	Site 13, NJ 31797 - 10560	Site 20, NJ 32317 - 10485
Site 7, NJ 31182 - 10150	Site 14, NJ 31887 - 10675	Site 21, NJ 32302 - 10370

### Candacraig to mouth of the Carvie Burn

Site 1, NJ 34252 - 10785	Site 5, NJ 34652 - 10920	Site 9, NJ 34907 - 10995
Site 2, NJ 34307 - 10840	Site 6, NJ 34717 - 10940	Site 10, NJ 34932 - 10990
Site 3, NJ 34522 - 10935	Site 7, NJ 34792 - 10970	Site 11, NJ 34982 - 11000
Site 4, NJ 34567 - 10925	Site 8, NJ 34822 - 10965	

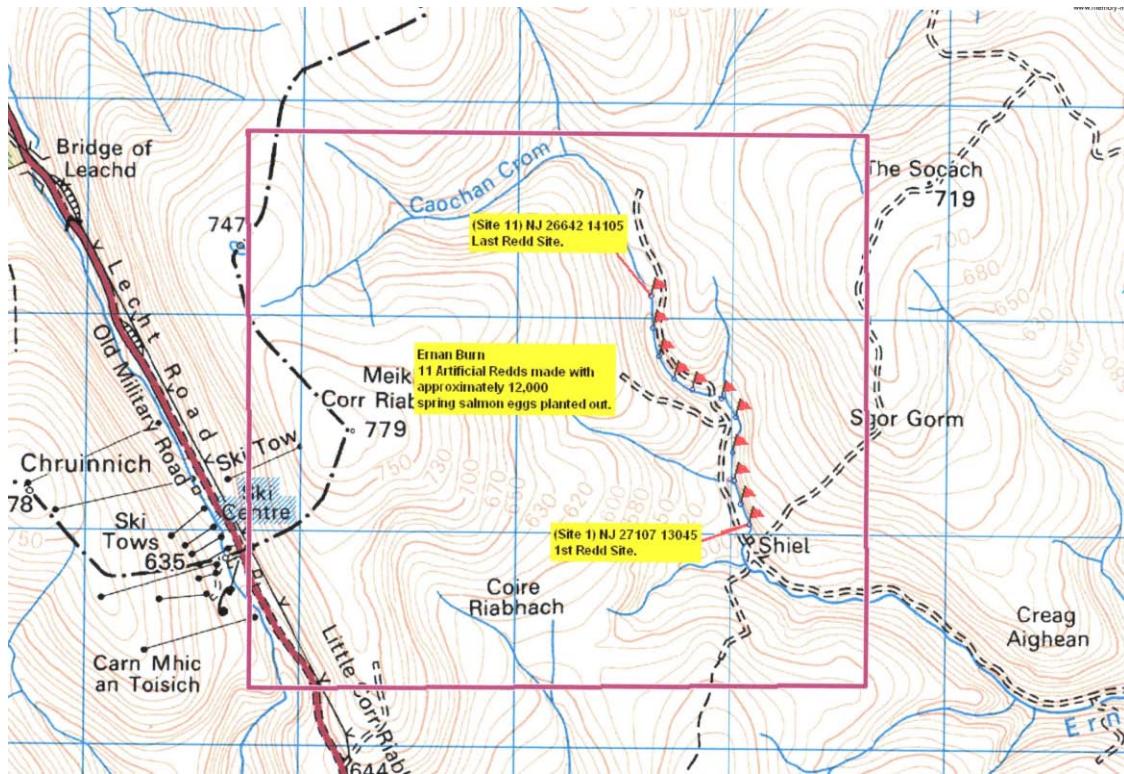
### Map below showing the two stocking areas



The last site for salmon stocking this year was the Ernan burn where 12,000 eggs were spread over 11 Redds. Grid References below with map of the site.

### Ernan Burn

Site 1, NJ 27107 - 13054	Site 5, NJ 27042 - 13545	Site 9, NJ 26682 - 13825
Site 2, NJ 27067 - 13140	Site 6, NJ 26972 - 13630	Site 10, NJ 26652 - 13955
Site 3, NJ 27037 - 13250	Site 7, NJ 26837 - 13670	Site 11, NJ 26642 - 14105
Site 4, NJ 27027 - 13380	Site 8, NJ 26750 - 13720	

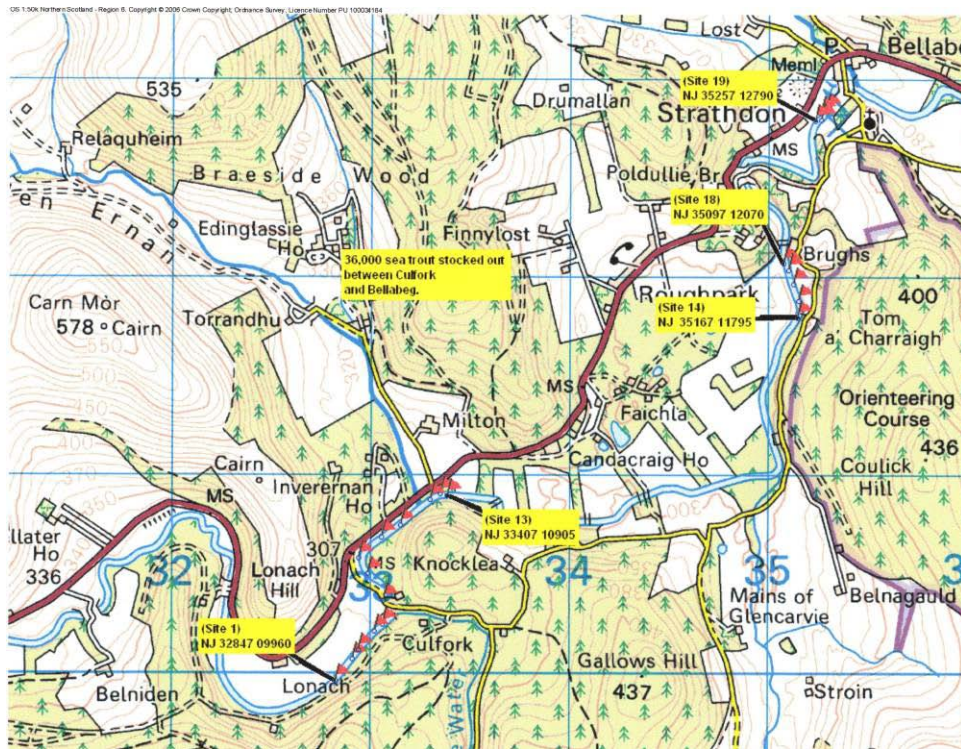




A total of 36,000 sea trout was stocked out into the river system on the 22<sup>nd</sup> of February. They were planted out from Culfork down to Bellabeg at Strathdon. Grid References and map below.

### Culfork to Bellabeg

Site 1, NJ 32847 - 09960	Site 12, NJ 33372 - 10905
Site 2, NJ 32932 - 10070	Site 13, NJ 33407 - 10895
Site 3, NJ 32962 - 10115	Site 14, NJ 35167 - 11795
Site 4, NJ 33042 - 10210	Site 15, NJ 35172 - 11880
Site 5, NJ 33082 - 10245	Site 16, NJ 35147 - 11965
Site 6, NJ 33087 - 10365	Site 17, NJ 35122 - 12035
Site 7, NJ 33007 - 10500	Site 18, NJ 35097 - 12070
Site 8, NJ 32962 - 10580	Site 19, NJ 35257 - 12790
Site 9, NJ 33077 - 10685	Site 20, NJ 35287 - 12795
Site 10, NJ 33172 - 10745	Site 21, NJ 35312 - 12895
Site 11, NJ 33322 - 10875	Site 22, NJ 35343 - 12905



All stocking has now completed for 2011

Jim Kerr